

# BCA 1

## BOWL TIPPER

The BCA 1 is a mobile bowl tipper, with left or right discharge, which allows the dough in the bowl to be transferred to a table in one operation.

The bowl tippers are used with the SPI A range of mixers.



technical data	
Tipping at the back	✓
Low tipping to a table	✓
Weight	340
connections	
Electrical supply	400V~TRI+T/50-60Hz
Power	1,13 kW
Rated current	3 A

### legend

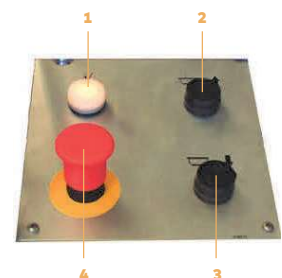
✓ standard

### Features

- + Welded steel frame with food-grade epoxy paint.
- + Equipped with a double safety device at the end of the stroke, high position.
- + Supplied with anchors for a compulsory sealing in the ground for the safety of operation.
- + Equipped with a hydraulic lifting system for maximum safety.

### Control panel

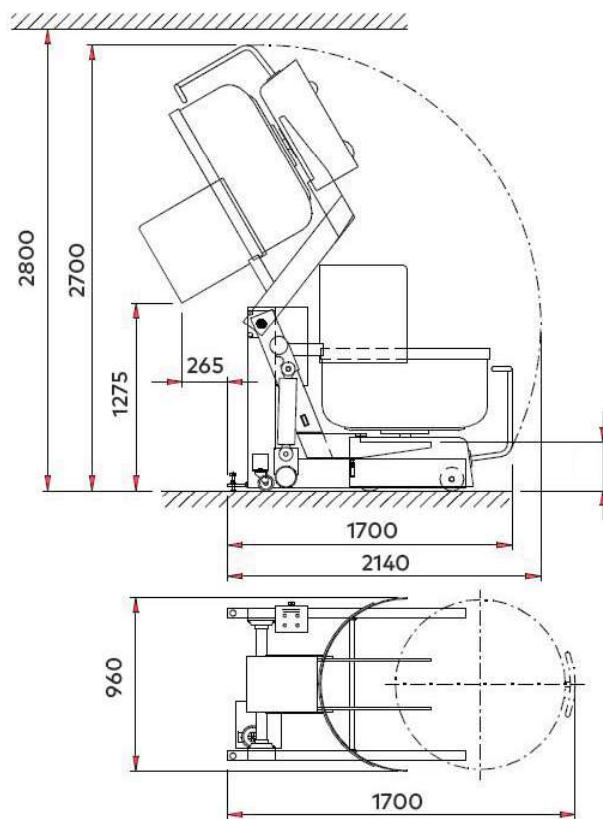
- 1 - Voltage presence indicator.
- 2 - Up push-button.
- 3 - Down push-button.
- 4 - Emergency push-button.



NON CONTRACTUAL DATA

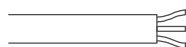
# IMPLEMENTATION

## DIMENSIONS AND CONNECTIONS

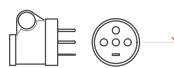


### Triphase electrical plug connection

Pavailler Solution:  
Triphase electrical  
cable provided



At customer's charge:  
PLUG connection male and  
female ht 1,20m.



Benefits  
Limits

1,20m

electrical installation principle



## MANY AND MORE, REAL GOODS

BERTRAND-PUMA - Rue Benoit Frachon - 26800 PORTES-LES-VALENCE (France)  
Phone : +33 (0) 475 575 500 - Email : [contact@sebp-bertrand.com](mailto:contact@sebp-bertrand.com)